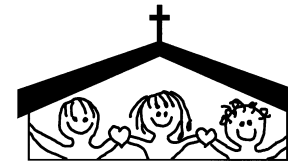


# The Resource



**Lutheran Association  
for Special Education**  
*...assists and supports schools  
to address the cognitive,  
social and spiritual  
development of children  
with special needs so they  
may fully enjoy their  
God-given potential.*



## *Herald the Holidays 2009*



Sharon Pahde shops while mom, Leslie Essner, and grandmother, Lori Leupold, introduce the girls to Santa.

The spirit of the Christmas season filled the room as 276 guests celebrated LASE's *Herald the Holidays* at Sunset Country Club. Guests kicked off their holiday shopping with bids on the beautifully displayed auction items that filled the entry hall. Sounds of laughter and joy filled the banquet room as **friends and families** including grandmothers, mothers, daughters and granddaughters enjoyed the luncheon and holiday fellowship. The fashion show took a personalized spin this year with models sharing outfits from their annual family holiday

traditions. **Models ranged in age from 18 month old twins to an 87 year young, soon to be great grandmother.** The friends attending this fundraiser helped to raise a record breaking **\$30,000 to benefit the children of LASE!**

Special thanks to sponsors, donors, the committee of ten extraordinary women, and to the attendees for their loyal support for this event. We couldn't do it without you!! Mark your calendars for November 6, 2010!

## Spring 2010

### Board of Directors

Don Hugo, Chair  
Warren Fick, Treasurer  
Michele Berra  
Dr. Gayle Grotjan  
John Obermann  
David Robinson  
Judy Ruf  
Bette Schlie  
Steve Siepman  
Rev. Rodger Venzke

### Advisory Board

Dave Drewes  
Dennis Gehrke  
Erica Hughes  
Chris James  
Kermit Starnes

Lori Christiansen, Ed.S.  
Executive Director

## Cardinals Care Funds Unique Reading Project for LASE Students

**St. Louis Cardinals Care**, the team's foundation, has awarded Lutheran Association for Special Education (LASE) a **\$3,000 grant** to purchase **30 MP3 players/headphones, audio books, and testing materials.** Students with reading disabilities can download and listen to audio files while following along in a hard copy of the book. LASE has received several grants in response to their focus on implementing assistive technology that allows students better access to the

general education curriculum in the areas of **reading and math performance.**

**St. Louis Cardinals Care** has distributed over \$12.3 million to select area organizations in the community that support children.

What a blessing and an honor to be selected from so many applicants to receive funding from Cardinals Care.

**Go Cards!!**



LASE students celebrate with Fred Bird at Busch Stadium.

From the Executive Director: *Serving the Lord with Zeal!*



LASE Executive Director, Lori Christiansen, with 2009 Herald the Holidays Student Ambassador, Hanna Holmann, Salem, Affton

Working with children is a rewarding job that requires energy and enthusiasm. Our LASE faculty chose the theme “*Serving the Lord with Zeal*” as the theme of the 2009-2010 school year based on the passage from Romans 12. God’s extravagant love for us motivates us to serve children with disabilities and special needs with *zeal and passion*. When I visit our teachers in their schools, I am amazed at their devotion to the children. Teachers are fervent about student success. Children are lovingly nurtured in their faith in Jesus. I’ve witnessed teachers going the extra mile to ensure that children and their parents are cared for with kindness and compassion.

*Please stop right now as you read this and pray for our children and staff.* Pray that our children always know Jesus as their Savior. Pray that our teachers are instruments of God to help children grow and learn. Pray that we are energized to “Serve the Lord with Zeal.”

Romans 12:10-11 (NIV)

Be devoted to one another in brotherly love. Honor one another above yourselves. Never be lacking in zeal, but keep your spiritual fervor, serving the Lord.

Mill Neck Foundation Supports Phonological Amplification Project

*Imagine* being a student in a classroom full of noisy children but you have a hearing loss. Sometimes you misunderstand or miss what is happening in the class. You are exhausted at the end of the day from trying to keep up with the rest of the class. Or imagine you are a student with an Auditory Processing Disorder. It takes you a long time to process what is being said, and when you finally do, the class has moved on to another topic. Or maybe you are an immigrant who is still trying to learn English. Everyone talks so fast. You have a hard time keeping up with what the teacher says.

These children are a part of the diverse, urban student population at **King of Glory Lutheran School** in St. Louis. **Janey Menner**, LASE Educational Consultant, and **Carol Lima**, LASE Speech Language Therapist, work with students with special learning needs at the elementary campus of King of Glory. They identified the need for a system that would provide amplified sounds in the classroom to benefit students that had difficulty with learning.

Thanks to a generous grant from **Mill Neck Foundation of New York**,



“We love it! The Broadcaster amplifies sound so outside noise from traffic is blocked and students are able to focus on learning.” says Donna Janis, Gr. 4 teacher at King of Glory.

LASE was able to purchase four classroom amplification systems for King of Glory. **The Hearit Broadcaster** is a portable FM amplification system designed for use in the general education classroom or in a special education class setting. The portable system comes with two classroom speakers and a **cordless headset microphone for the teacher**. The teacher simply puts on the microphone, turns on the unit, and her voice is amplified for the class. The Broadcaster is uniquely calibrated to enhance speech sounds, which improves the

Upcoming Events

MARK YOUR CALENDAR!

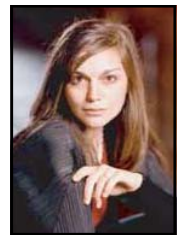
February 7th  
Hats & Hearts  
Tea



Luncheon, Boutique & Costume Parade -  
Repertory Theatre  
of St. Louis

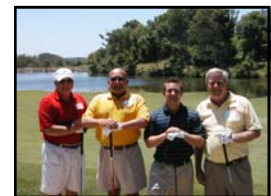
Lutheran Church-Webster Gardens  
2-4pm  
Tickets \$20-Tables of 8

February 28th—  
Erin Bode  
Benefit Concert  
Lutheran Special  
Education and  
Footprints Christian  
School Counseling



Sponsored by  
Concordia Publishing House  
7-9pm

Concordia Lutheran  
Church-Kirkwood  
Tickets: \$20 Adult \$10 Children  
\$25/\$15 at the Door



June 28th—28th Annual  
LASE Golf Tournament  
at Tapawingo  
Registration: \$225 includes  
lunch, golf, cocktails & dinner  
Contact 314-268-1234 for event  
details and volunteer opportunities.

attention and auditory processing skills of all students.

Teachers in Grades 1-4 at King of Glory love how the Broadcaster helps their children listen and learn. Students are more engaged in learning when they hear the crystal clear amplified sounds. Students remind the teachers to turn on the microphones because they want to hear everything going on in class!

The Mission of the Mill Neck Family of Organizations is to enhance the quality of life for people who are deaf, or who have other special communication needs. Thanks to Mill Neck for partnering with LASE for the Phonologic Amplification for Urban School Students Project.



**TIME ON YOUR COMPUTER CAN RAISE MONEY FOR THE CHILDREN OF LASE**

Just download the **GoodSearch** – Lutheran Association for Special Education - LASE toolbar at <http://www.goodsearch.com/toolbar/lutheran-association-for-special-education-lase>



Each time you search the web with GoodSearch's Yahoo-powered search engine, about a penny will go to LASE. Also, every time you shop online through GoodShop at 1,000 participating stores including Amazon, eBay, Target, Apple, Staples, Expedia, etc., a percentage of your purchase will be donated for free! The site also has thousands of money-saving coupons!

To give you a sense of how the money can add up, the ASPCA has already earned more than \$30,000! If 1,000 people used it twice a day, LASE could earn \$7,300 in one year. **Please forward this information to 10 friends** about the **GoodSearch** toolbar today to show your support for the children of Lutheran Association for Special Education.

**THE GIFT THAT KEEPS ON GIVING**

Don't know what to give close friends for their birthdays? Puzzled over what to get someone who seems to have everything? **Give the gift that keeps on giving** by making a donation to Lutheran Association for Special Education (LASE) in honor of birthdays, anniversaries, and special occasions. You may also honor a loved one with a memorial gift to LASE. In addition to acknowledging your gift, LASE will also send a letter to the person or family of the one you are honoring to inform them of your contribution. Gifts to LASE will provide the opportunity for children with disabilities and special needs to grow in their faith and grow in becoming productive, responsible citizens. By investing in the lives of children, you are investing in the future of our churches, community, and the world. Children who are grounded in their faith in Jesus will impact their world for generations to come. **You can't ask for a better return on your investment.** To give a tribute or memorial gift, please use the enclosed envelope or call the LASE office to use your Master Card or VISA. Thanks for honoring your friends and loved one through your gifts!

- THANK YOU to the  
*Following LASE Supporters:*
- Lutheran Foundation of St. Louis
  - Variety - The Children's Charity of St. Louis
  - The Webb Foundation
  - St. Louis Christmas Carols
  - Innovation Technology Education Fund (ITTEF)
  - Cardinals Care
  - Boeing Employees Fund
  - Mill Neck Foundation



ADDRESS SERVICE REQUESTED

Lutheran Association for Special Education  
3558 S. Jefferson  
St. Louis, Missouri 63118 314.268.1234

